

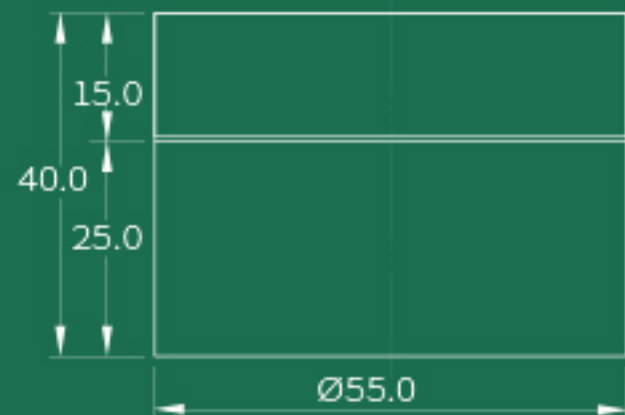
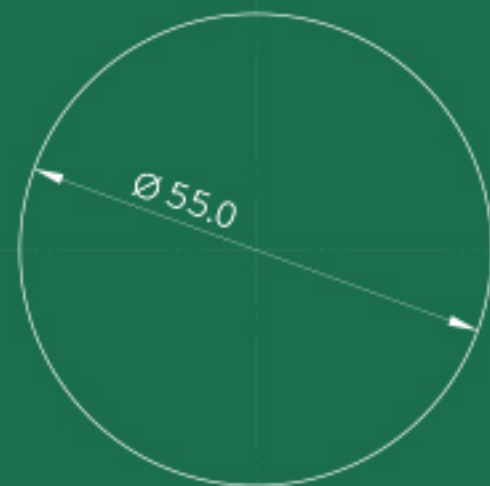
# BJ15ML

**SIZE**  $\phi$ 55.0 mm x 40.0 mm

**CAPACITY** 15 ml / g

**MATERIAL** Cap: Bamboo / Ring: ABS / Stem: PP  
Inner: PP / Base: PMMA

# Lomei



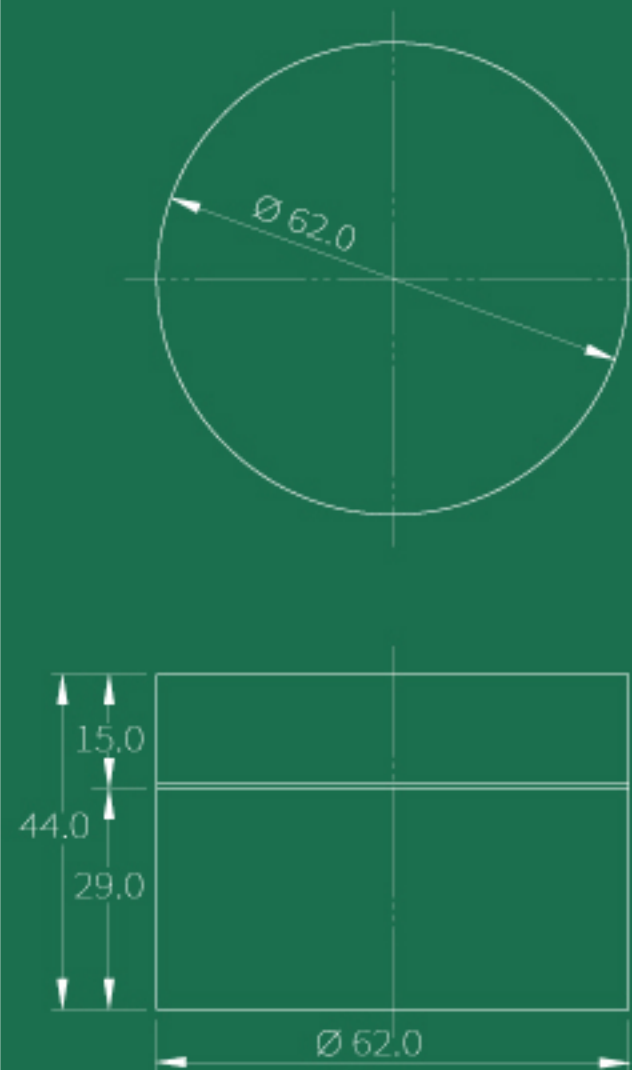
# BJ30ML

**SIZE**  $\phi 62.0$  mm x 44.0 mm

**CAPACITY** 30 ml / g

**MATERIAL** Cap: Bamboo / Ring: ABS / Stem: PP  
Inner: PP / Base: PMMA

# Lomei



# BJ1038

**SIZE** 41.0 mm x 41.0 mm x 32.0 mm

**CAPACITY** 10g

**MATERIAL** Cap: ABS+AS | Base:PS / PETG | Outer: Bamboo

# Lomei

